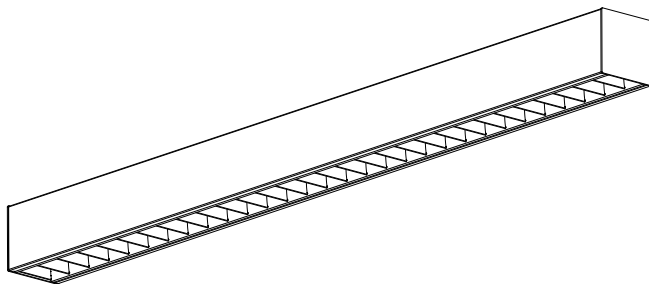


Montageanleitung

Ⓒ mounting instruction Ⓒ Notice de montage Ⓒ Instrukcja montażu
Ⓒ Instrucciones de montaje Ⓒ Istruzioni di montaggio

AL-T16 AL-R1



RIDI Leuchten GmbH
Hauptstrasse 31 - 33 · D-72417 Jungingen
Tel. 07477/872-0 · Fax 07477/872-48
kontakt@ridi-group.de · www.ridi-group.com



D Für die Installation und für den Betrieb der Leuchten sind die nationalen Sicherheitsvorschriften zu beachten.

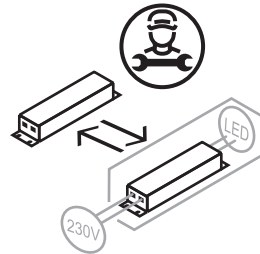
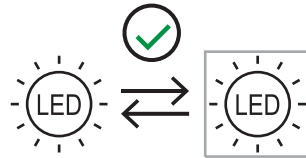
GB Please note national safety instructions for installation and operation of this luminaire.

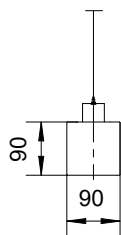
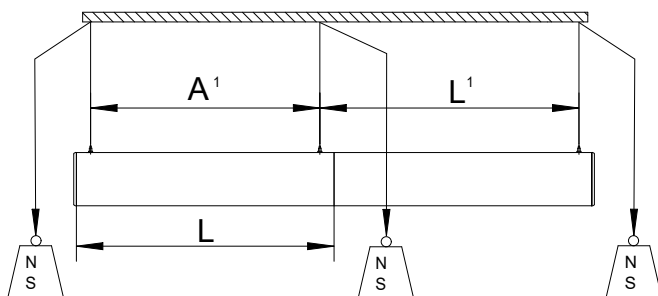
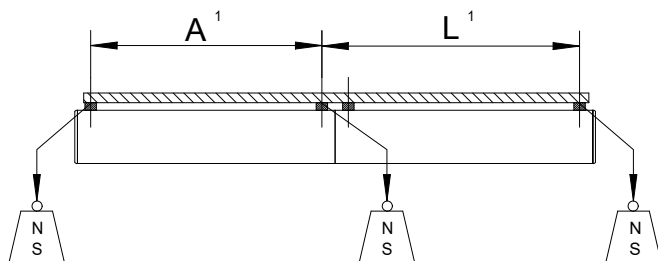
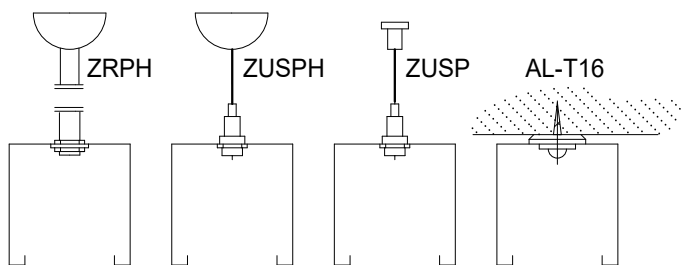
F Pour l'installation et le fonctionnement des luminaires il est impératif de respecter les normes nationales de sécurité en vigueur.


PL W celu prawidłowej instalacji i poprawnego działania oprawy należy przestrzegać krajowych przepisów bezpieczeństwa.

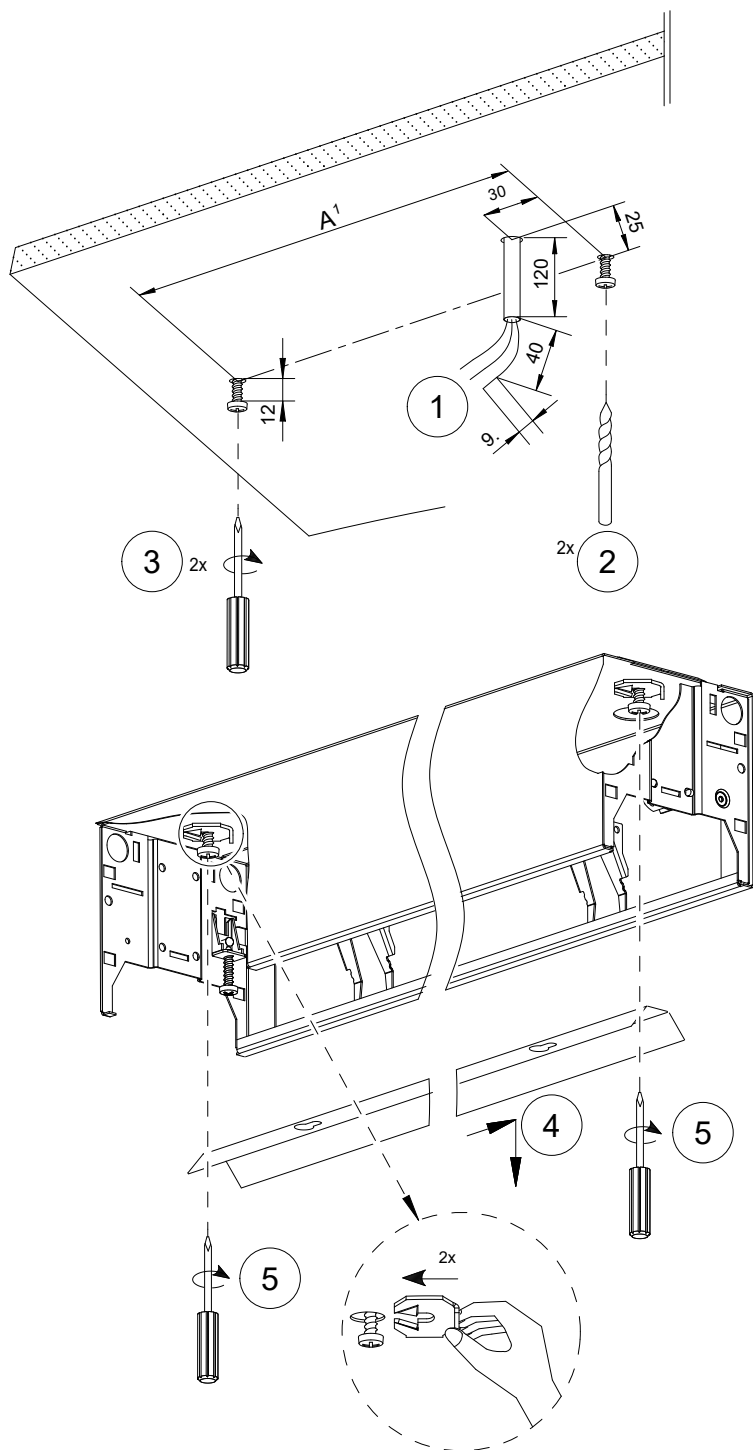
E Para la instalación y la puesta en funcionamiento de las luminarias deben observarse las normas nacionales de seguridad.

I Per l'installazione e il funzionamento delle lampade si fa riferimento alle normative di sicurezza nazionali.



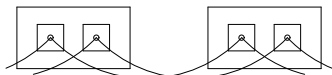


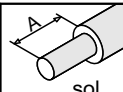
AL-R1x145...	1480	1430	225N
AL 135/149/180...			
AL 128/154...	1180	1130	185N
AL-R1x115...			
Typ	$L_1=L$	A^1	

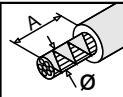


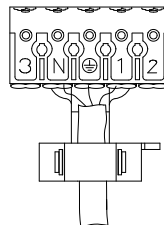
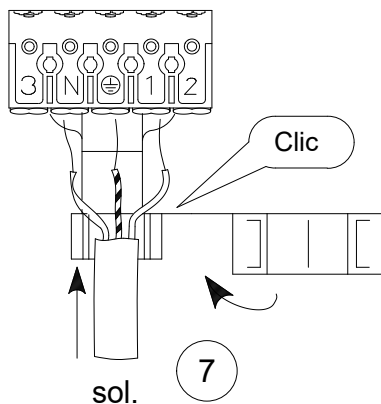
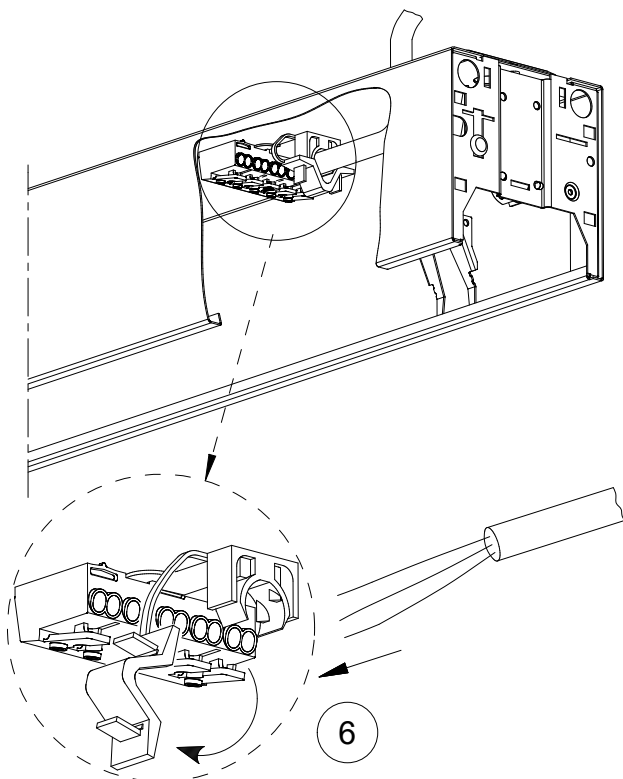
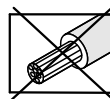
RiDi

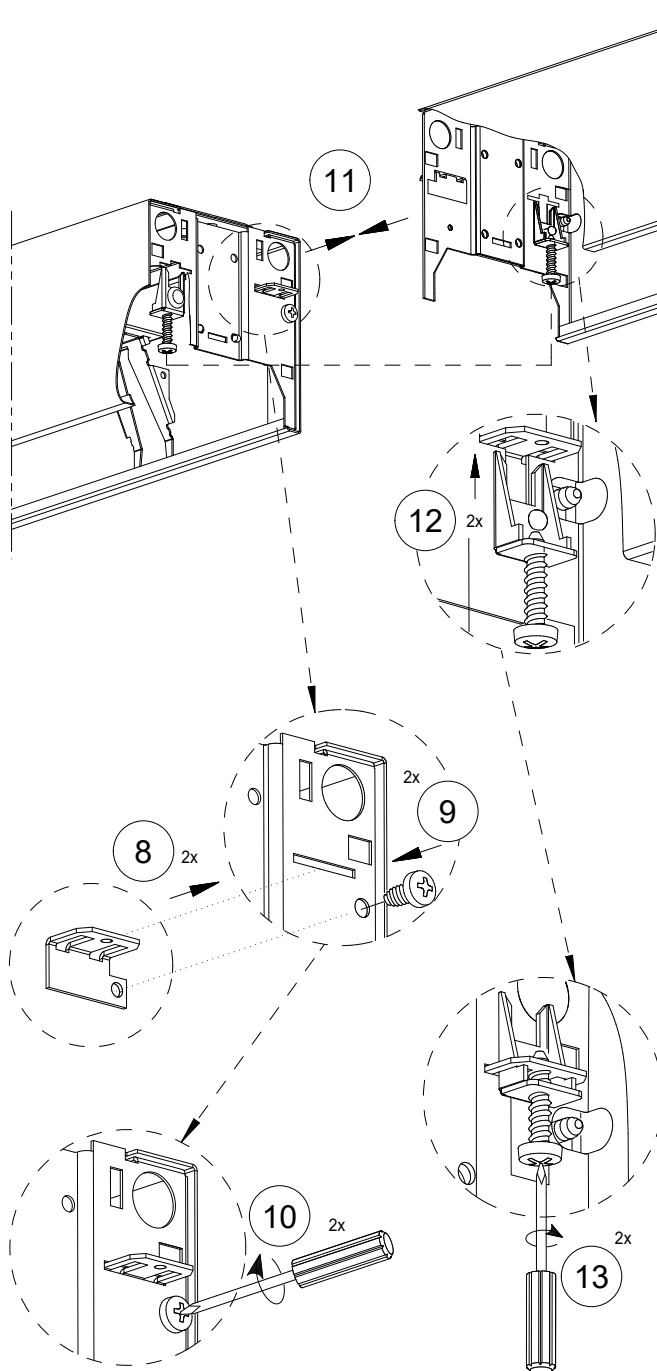
AC 220-240V/50-60Hz



	mm ²	A
sol.	0,5-1,0	9
0,5-2,5mm ²	1,5-2,5	12

	Ø	A
	0,8-1,2	9
max. Ø1,8mm	1,3-1,8	12





AL-E
Art.Nr.0203779

